

Global Tracker

Real-time Tracking For Professional Results

Owners Manual

Security Concepts

110 Palm Ave

Millbrae, CA 94030

Tel: (650) 270-8870

E-mail: **Trackingtheworld@aol.com**

Technical Support Available 7 Days A Week

INTRODUCTION

The Global Tracker is a self-contained real-time GPS tracking system. The unit consists of a GPS receiver, GSM cellular transceiver, and power saving circuitry, modem, and rechargeable battery pack.

The unit is designed to be easily mounted and track for up to **6 days** without the need to be recharged. This means you can install the tracker just by placing it under the vehicle without the need to install a battery pack and find a place for the GPS antenna. With the GPS antenna facing toward the ground the antenna must be within a few inches from the edge of the vehicle. If you can't place the tracker near the edge you must use the antenna facing toward the sky. If the GPS antenna is used facing the ground, the tracker will take longer to obtain a fix. Remember that the GPS receiver is only being powered up while the phone is in use. The 4 strong magnets will keep the tracker from falling off even when the vehicle goes off road.

Tracking can be done from a standard phone line or from another vehicle using a cellular phone. The Global Tracker is not designed to transmit the GPS data for long periods of time rather it allows you to locate the vehicle.

With the use of a prepaid SIM card, you will not incur a monthly bill but only be charged while the phone is transmitting on a per minute basis.

TABLE OF CONTENTS

Introduction	2
Unpacking	4
Software Installation	4
Receiver/Modem Setup And Use	5
Setup For Field Use	5
Placement of the Global Tracker and the GPS Antenna	6
Fugawi Setup Screen	8
Changing Live Track Options	9
Real-time Navigation Window	10

UNPACKING

Included with WorldTracker:

1. Global Tracker
2. Global Tracker charger
3. GPS antenna
4. Receiver/Modem
5. Moving Map Software and USA STREETS

SOFTWARE INSTALLATION

Write down the serial number that is on the CD, you will be asked for it during installation. Insert the Moving Map Software disc into your CD drive. Click on the Start Button, and go to Run. Click on Browse and find your CD drive. In the root folder of the CD disc there will be a SETUP.exe file, select it and then click Open. Follow the installation instructions.

Once installed, open Fugawi 3. Click on Forms and open the GPS folder. By default it will be already in the settings window but if not, simply choose it. Click on Change Port and Set the baud rate to 1200 and the port to what your computer uses as the communications port. Generally this will be COM 1. Click on OK. Remove the CD from the drive. Fugawi is not yet fully configured, and requires the USA Streets data.

Replace with the USA Streets CD. If you prefer not to use the CD every time you will be tracking, you can copy the contents to your hard drive. The software will track with greater speed if this is done, especially on older computers. To open the map, click on File and USA STREETS. To keep the ICON for the vehicle near the center of the map you can depress the Center GPS button in the left-hand tool bar. Zooming is easy, simply hold the left button down on the mouse and drag a square of the area you want to zoom in on and let go. You can keep doing this to continue zooming in.

RECEIVER/MODEM SETUP AND USE

The receiver/modem can be used with either a standard phone line or a cellular phone. If using a cellular phone, the headset jack on the phone must be a standard 2.5-mm type. The phone also needs to be able to transmit and receive in analog mode. A dual mode phone is capable of this.

Connect the provided splitter to the phone line that you will be calling from. The splitter connects the supplied modem to the phone line while retaining voice phone functions.

The modem plug connects to the serial port on the back of your computer. Some newer computers only have USB ports in which case a converter will be necessary. A USB to serial port converter is available at your local computer store.

SETUP FOR FIELD USE

Ensure that a new 9-volt battery is in the receiver/modem. Find a GSM cellular carrier in your area and purchase a SIM card. You can purchase prepaid service or sign up for a monthly service plan. If you don't want to deal with a monthly bill or want to make your purchase anonymously then buy a prepaid card. Open the Global Tracker and insert the SIM card. Close the unit.

The Global Tracker can be charged in 3 hours with the included charger, and will last for about 6 days while in use. Turn the Global Tracker on with the power switch. Turn the GSM transceiver on by momentarily pressing the button near the GPS antenna jack. Hold the button in for about 2 or 3 seconds before letting go. There is a small hole that allows you to see when the Global Tracker is on. After powering up the unit a green LED can be seen through the hole. To determine if the unit is powered up, press the button for less than a second. This will make the same LED to flash green. Calling the Global Tracker will also cause this green glow to occur for a few

seconds.

Call the Global Tracker by dialing the phone number the GSM cellular carrier assigned your SIM card. The Global Tracker will answer after the first ring. You must put the tracker outside with the GPS antenna facing towards the sky or directly towards the ground. Make sure the antenna has a clear view. The antenna will not work inside a building, very close to a large building (more than a few stories), or under metal or concrete.

You can listen to the communication link by using your standard phone for testing purposes. When you hear a continual burst of data noise through the phone, turn the receiver/modem on and hang up. After a few seconds, pick the phone up and listen for the WorldTracker's data noise.

You should now see an icon on the moving map software. You must be able to see a map on the screen of your computer first. In the lower left-hand part of the computer screen you should see a green or yellow dot. If you see a red dot, this means that the computer has received the data but the connection may have been lost. Lift the phone to check for data noise. If there is none, the link has been lost or broken. Call the tracker again. If the software displays the words "GPS NONE" then the computer is not receiving the data correctly. Check the settings on Fugawi 3 again.

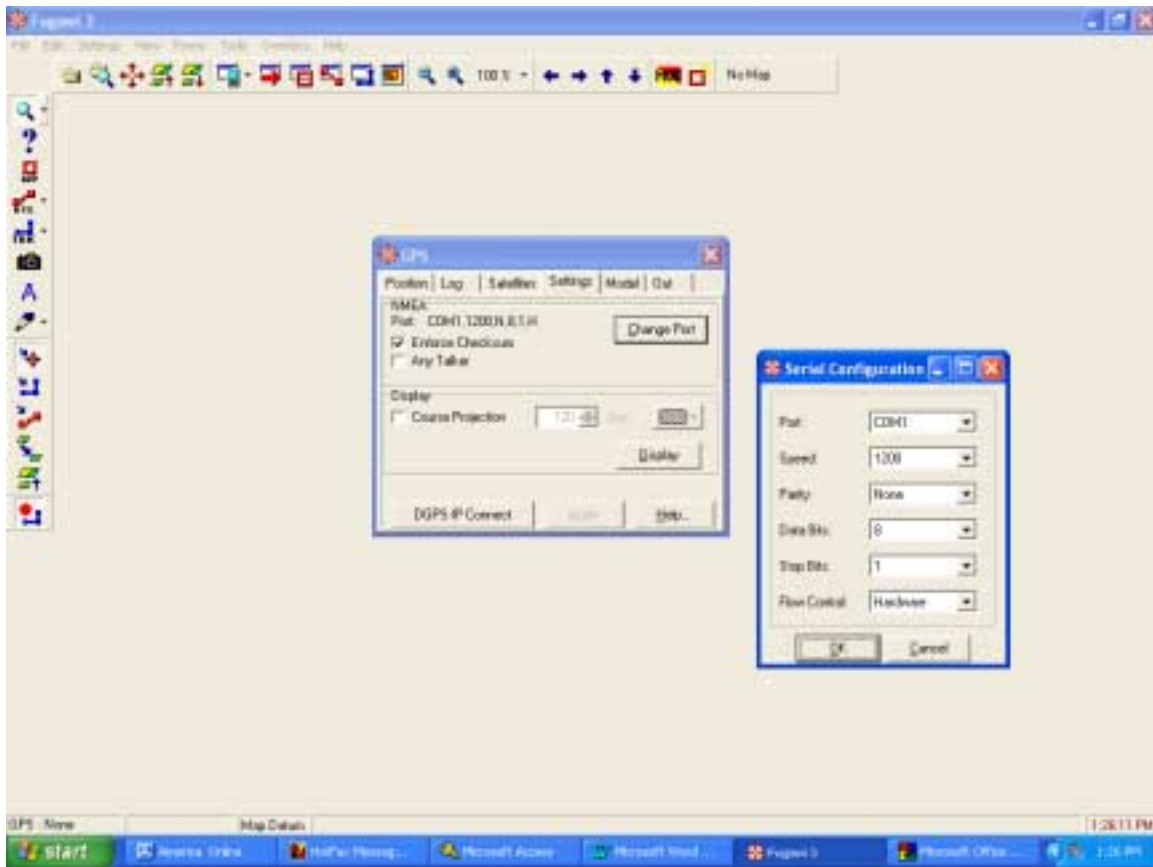
PLACEMENT OF THE Global Tracker AND THE GPS ANTENNA

The Global Tracker uses (4) 35-lb magnets to keep it attached to the vehicle. Make sure, before you send the tracker off with the vehicle, that it has been attached to a secure, flat, metallic part of the underside of the vehicle. Test to see how secure the tracker is by trying to move it away from the vehicle. If you can't pull it away easily, then it should be secure enough. A screwdriver or something similar may be necessary to actually remove the Global Tracker from the vehicle.

The GPS antenna is on a relatively short piece of coaxial cable. Try to place the tracker that is within a few of feet from the edge of the back or front bumper. In some instances you may be able to put the tracker within a few inches from the edge of the vehicle, in which case you can place the GPS antenna so that it faces the ground. This will only work if the vehicle doesn't travel on dirt roads or with roads that are heavily shaded by trees or tall buildings. The GPS antenna will always give you better results if it is facing the sky. The GPS antenna can be placed under any plastic part of the vehicle. This includes bumpers or other nonmetallic surfaces. Once you have placed the GPS antenna on a vehicle, you should check to make sure it is receiving the satellite signal. Be sure the area covering the GPS antenna is not metal. We provide Velcro on the top of the tracker and on the back of the GPS antenna to stick the components in place.

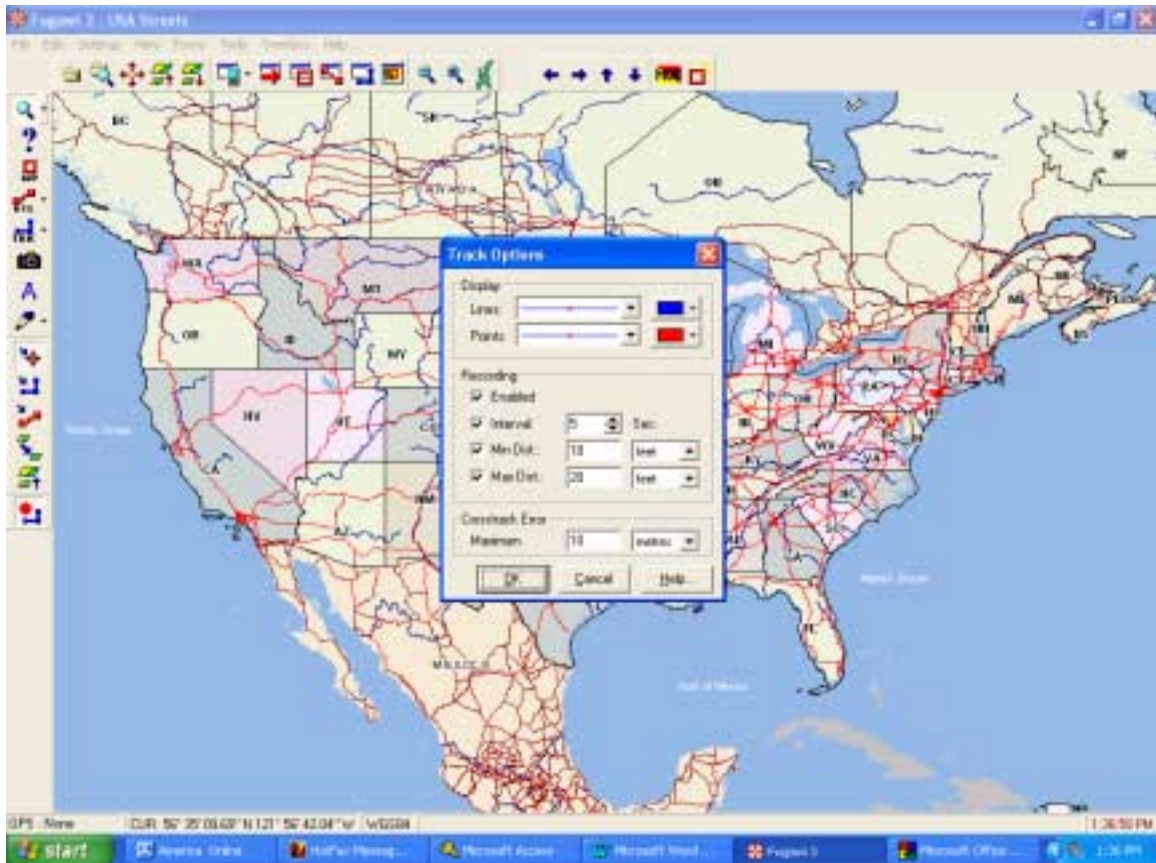
In the next few pages, we will show you computer screen shots of the software that will assist you in setting up Global Tracker.

FUGAWI SETUP SCREEN



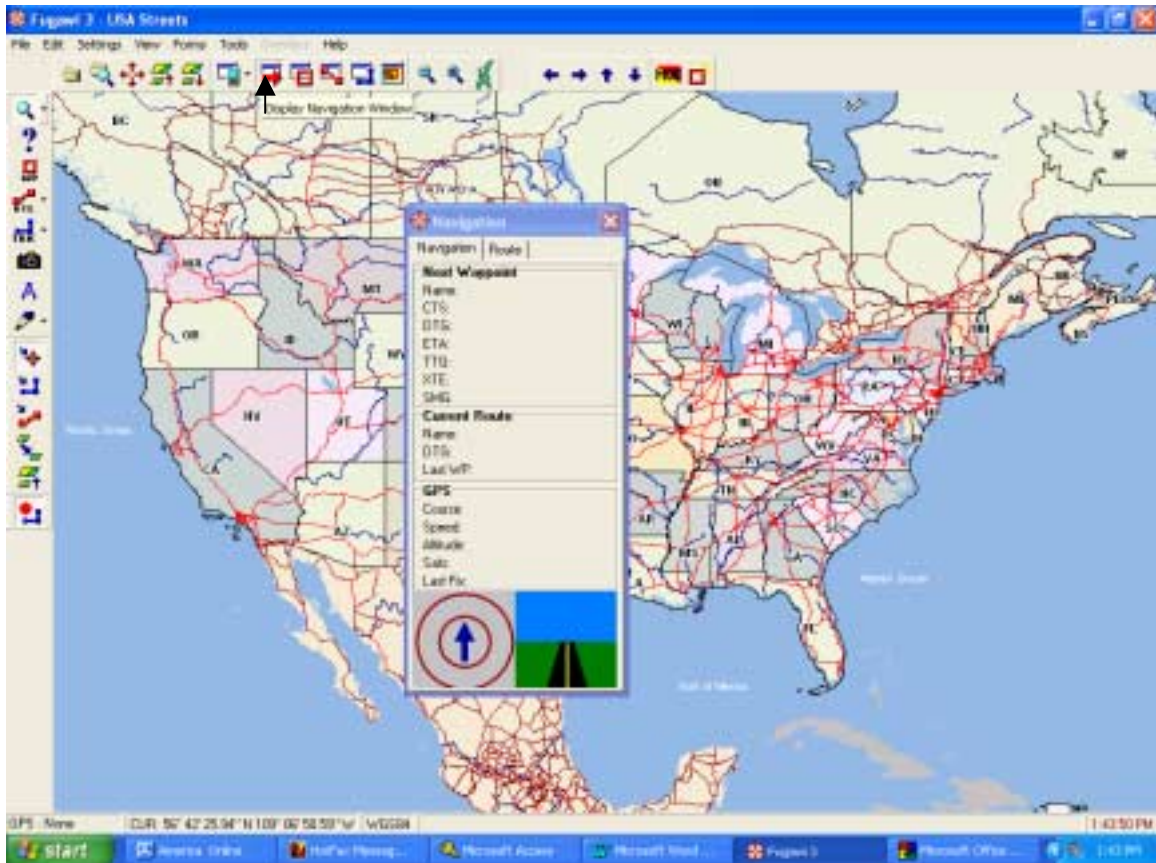
Use this screen to change the Port and baud rate of Fugawi to track with the Global Tracker. Com port is generally set to COM 1 but not always. Check with your computer settings. The baud rate is always set to 1200. You do not need to change anything else.

CHANGING LIVE TRACK OPTIONS



You can set the software to keep track of live tracking by telling it to draw and record points. To view this window, click on Settings at the top of the screen and then Track. Enable the live track drawing and tell it at what intervals to record the track along with the color and size of both the lines and dots. To keep the vehicle near the center of the screen, depress the “Center GPS” button located in the far left tool bar.

REAL-TIME NAVIGATION WINDOW



This window comes in handy when you want to know the direct of travel along with the speed of the vehicle. The Navigation window button is located at the top of the screen. If you want to view the data that is being received, click on “Forms and GPS”. When the window opens, select the “Log” option. In this window, check the “Active” box. The data should be visible in this screen.